

Eau Claire
Golf & Country Club

Tee and Bunker Renovation



Eau Claire
Golf & Country Club

DECEMBER 22, 2020

Table of Contents

Renovation Development	1
Introduction.....	2
Letter from the Green and Grounds Chairman.....	2
How we got here	3
Project 1 - Bunker Renovation	4
Benefits.....	4
Design	4
Project 2 – Tee Renovation	5
Benefits.....	5
Design.....	5

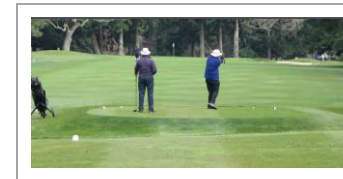
Tee Renovation

The System



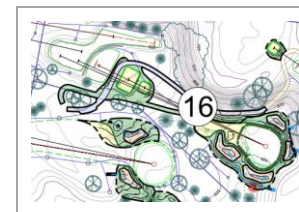
Based off swing speed, it's relatively easy to calculate each player's relative club selection and therefore, teeing location. There are several systems available based off driver distance, handicap, etc. The USGA has recommended ECGCC consider a graduated tee system such as Longleaf, etc.

Benefits



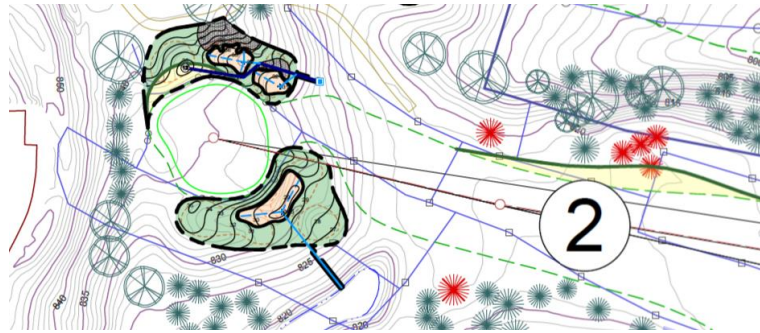
A graduated tee system allows each player the opportunity to play each hole the same relative to par regardless of ability improving the experience, pace of play and course conditions.

Design



The tee surface will be seeded with creeping bentgrass with sodded sides. The surfaces will be laser level graded and shaped to fit comfortably into the course.

Bunker Renovation



Bunker size significantly reduced (~50%); results in labor saving.

Benefits

More appropriate bunker sand, flat bottomed, grass faced bunker style will result in no washouts saving significant labor expense and a longer lasting bunker sand.

Grass selection for the bunker face will be slow growing, drought tolerant reducing mowing, fertility, and water expense.

Design

The new bunkers will be primarily flat bottomed with a slight sand flash where appropriate and a grass face. Areas seeing less activity will feature tall, wispy fescue further reducing labor and adding a unique characteristic. Fairway bunkers add strategy and aesthetics off the tee.

Renovation Development

Tee Planning Committee



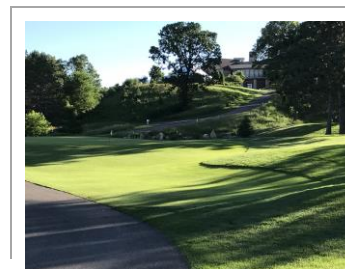
Dr. Lee Mayer
Heidi Olson
Linda Nicastro

Green and Grounds Committee



Dr. Lee Mayer – Chair Cole Stark
Linda Nicastro David Pokrandt
Greg Bremer
Dan Meyers
Bill DeBruyckere

Staff and Professionals Involved



Kevin Norby ASGCA–Golf Architect
Jon Schmenk ASGCA–Golf Architect
John Daniels–USGA Agronomist
Nick Peinovich–Grounds Superintendent

Introduction

Dear Fellow ECGCC Members,

In June 2020, ECGCC was awarded a complimentary visit from an USGA agronomist. During that visit, the Agronomist recommended ECGCC consider a bunker renovation to reduce maintenance and improve playability and aesthetics. He also noted the club should consider addressing playability issues with teeing locations, in particular forward teeing locations. Previously, the club had been working with an architect named Kevin Norby, Norby Golf Designs, from the Twin Cities with extensive experience restoring "Golden Age" (courses built between 1910-1937) golf courses like ECGCC which was rebuilt on the current site in 1929. Norby Golf was approached again this fall by the club to address these needs and prepare a plan for tee and bunker renovation. Kevin has been very complimentary of the original architects, Charles Ramsdell and Tom Vardon, and their design, choices, and use of the topography. We have been fortunate to reap those compliments over the years and enjoy the opportunity to play the course daily as members. Norby Golf Designs has completed plans which have been presented to the green and grounds committee and board of directors. The plan was recently sent out to contractors to provide estimates.

One of the primary features of the design are graduated tee boxes, bunker renovation, and preserving and enhancing a few areas of the course that lack a consistent golden age course aesthetic. Graduated tee boxes were strongly recommended by the USGA to allow all ages to find their desired tees and enjoy the hole as designed for par equally as all other handicaps. The goal is that shot and club selection will play similarly to others playing different tees appropriate to their swing speed and playable yardages. This is very common trend currently in golf that many courses have completed improving opportunities to par and therefore, an improved golf experience and pace of play. Added benefits have been competitive opportunities from different tees when desired, strategy by allowing for more variety in course setup, and improved conditions with more teeing locations.

The Bunker renovation makes the most substantial changes by resolving several issues: maintenance expense, playability concerns, and improving and restoring the overall aesthetic. The design highlights our course's redeeming design characteristics while cutting bunker square footage in half leading to a major reduction in maintenance expense. He has also found great synergy resizing, shaping, and filling bunkers that highlight our course's already great contours, topography, and strategy. While working on bunkers and green surrounds, dirt and fill will be generated and in turn utilized to build tee boxes without having to turn to outside vendors and saving significant expense in material cost.

The goal of this project is to reduce labor expense, improve member satisfaction with tee locations, and bunkers. It is also to accentuate and further align the positive features of the golf course, while also helping separate ourselves from our competition

Sincerely,

Dr. Lee Mayer Nick Peinovich

Facts and Insight

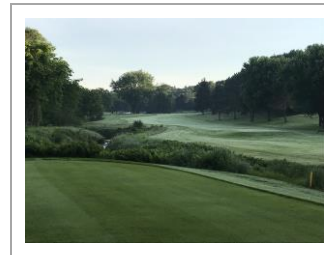
Goal: Reduce labor expense, Improve member satisfaction with tee locations, and Accentuate and further align the positive features of the golf course.



-Bunker sizes will be reduced by about **50%** even while increasing the number of bunkers resulting in significant labor reduction.

-New teeing locations will allow much more **flexibility** in course set up and result in improved conditions, **strategy**, and variety.

-Forwardmost tees will be built into the fairways reducing maintenance and shaped to prevent awkward lies but allowing a more formal golf experience for beginning golfers and high handicaps.



-#5,7, 10, and 16 showcase additional construction that will improve the playability and more align these holes with the aesthetic of the other golf holes. It also provides an opportunity to mine fill for tee and bunker construction and reduce material costs.

-Bunker shape will be flat bottomed traps with a slight lip of sand and grass faces. This will reduce maintenance and restore the bunkers to a classic style. Some bunkers will have 2-3" fescue on the back sides to further reduce maintenance and create a unique style.